

**President's
 Message**

Jeff Meiter, P.E.



Inside this issue

Newsletter Editor's Message	1
January General Meeting	3
ASCE E-Day	4
February Social	6
Aloha from the 2019 WSBL	7
Upcoming Events.	
Technical Tour	8
Joint Meeting with ITE	9
May General Meeting	10
Annual Awards Banquet	11
PE Booth	20
ASCE Board of Directors	21
Professional Directory	22
Employment/Calendar	23
Membership Information	23
Newsletter Information	24

Hello ASCE Members,

As an engineer, one of our roles in society is to make life better for those around us through the use of knowledge, innovation and experience. We engineer new technological solutions for everyday challenges, from more efficient ways to clean and transport drinking water to bridges that are structurally sound. Engineers must weigh different design choices and choose solutions that best match the requirements and needs. Their crucial and unique task is to identify, understand, and interpret the constraints on a design in order to produce a successful result.

Unfortunately, I think many of us get into a daily routine of plan checking/reviewing, plan preparation, calculation tasks and miss out on the bigger picture of what our particular role is in the larger story. Our daily job may simply be calculating the grade on a curb profile or determining the time of concentration of a watershed area. This individual task may be small and repetitive and seem insignificant, but it is necessary for the overall project to be successful. In addition, project deadlines and profit margins often rob the engineer from the joy of knowing their particular task makes a difference in the world, because of the requirement of completing something in a rapid manner and moving on to the next task.

Several years ago, I was blessed to utilize my engineering expertise to design and build an inexpensive but workable water filtration system that cleaned and distributed water for villager in a remote portion of Papua New Guinea. Calculations were completed and decisions were made to produce the desired result of how best to capture, clean and distribute water effectively to the villagers. It was hard, tedious work at the time, but when it was all completed, I realized that my efforts allowed several hundred people halfway across the world to have access to clean water for drinking, showers and laundry.

...CONTINUED ON PAGE 2



PRESIDENT'S MESSAGE

...CONTINUED FROM PAGE 1

So the next time you may feel stuck in the sinking quicksand of the daily mundane tasks, take a mental breather from what you are doing and be reminded of the larger role you play in society as an engineer. You are designing and creating infrastructure that allows people to drive to work, flush their toilets, drink clean water and many other necessary, vital tasks. It is a high calling that often does not get much recognition, but is one that has a positive, lasting effect on this world.

With that said, our annual Awards Dinner Banquet will be on June 27, 2019 and the application links are now open! It's time we celebrate Engineers and the work we have accomplished in the San Bernardino-Riverside area. I hope you will all join us in celebrating those who raise the bar of the Engineering Profession and inspire us with a vision of Engineering Excellence. Awards will be presented to individuals who best exemplify the engineering profession and to public and private engineering projects demonstrating innovative design, project complexity, benefit to the community, sustainable projects, unique operations and outstanding aesthetics. It's a time for leaders in the industry to come together to honor our colleagues and celebrate the positive impact we have had in community. We will also be handing out Scholarships to exceptional students who have demonstrated a commitment to engineering and ASCE.

Sponsorships are available for this Awards event, it's a great opportunity for your company to be featured, and a listing will be provided in the event program, reserved seating for you and your guests! Registration for this event and for sponsorship opportunities are within this newsletter.

Sincerely,
Jeff Meiter, P.E., M.ASCE
ASCE San Bernardino and Riverside Counties
President



January General Meeting

By: Mitzi Sepulveda, EIT

ASCE held our first general meeting of the year on January 24 at the ProAbition restaurant in downtown Riverside. We got a great turn out of about 20 people, which was unexpected since we changed the usual meeting location and didn't know if we would have less attendance. We experimented with this location because; why not? New Year, new location? Maybe? Well, just like most New Year resolutions, this location may just be left in January. The Board might come back to this location but in the meantime the upcoming meetings will held at our usual Riverside Convention Center. I digress.



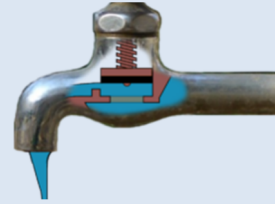
The speaker was Albert A. Webb Associates' President and CEO, Mathew Webb, PE, who shared his experiences as a civil engineer expert witness in litigation cases. Mr. Webb has many years of experience serving as an expert witness and he shared some of those experiences with us. He provided guidelines and tips on how to improve your cases. I am a newer engineer to the industry so I don't think I could be a very good "expert" witness right now. However, some of the tips Mr. Webb gave to the audience were fundamental tips that I could apply to my job. He mentioned how confidence and preparedness play key roles in win-

ning your litigation cases. He mentioned how these key roles can reinforce your credibility with the jury in a court case. He was also able to compare it to situations that I could relate to. For example, when you go into a team meeting and you have to discuss a project you've been working on, you want to go into that meeting prepared to answer potential question and answer with confidence. This is how you gain credibility with your team, boss and even clients. If you didn't attend, you missed out!



ASCE 3rd Annual Engineers Day at East Valley Water District

By: **Mohammad El Hocheimi, PE**
& **Victor Elia, PE**



I am very confident that on February 8, 2019 I have met some of my future colleagues; the next generation of smart and talented engineers that are ready to make the world a better place. How can we describe our 3rd Annual ASCE San Bernardino and Riverside Branch Engineers Day, simple



“Tremendously Successful”. Over 80 students from different school districts came to Highland to tour East Valley Water District for Engineers Day to learn about Water and Sewer treatment, what civil engineer do at the District and how these fire hydrants on the side of the street operate.

The students toured EVWD Plant 134 booster station and electric hydraulic plant. They learned about SCADA, toured water testing labs and got a special demonstration from the awesome operation crew of EVWD. They saw a cross section model of a fire hydrant, learned about flanges, valves and the tools used when working on water lines. The students then toured the district offices and ended their day with building a structure



made from marshmallow and pasta sticks. It was definitely a memorable day, and hopefully got the students interested in a career in civil engineering. Now back to the

statement I mentioned at the beginning of this article, how do I know I met some of my future colleagues, well when you hear the students asking questions about how to make sure the water delivered to our homes are clean, and see them so focused on building a structure that would hold the highest number of marbles you will know why I am so confident.



This event wouldn't have been successful without the generous contribution from our sponsors (KWC Engineers, WSP USA, SWT Engineering, HDR, Albert Webb and Associates, Inland Empire Utility Agency (IEUA), Project X Corrosion Engineering, IE Commuter, and East Valley Water District (EVWD)). I also want to thank my co lead Victor Elia for his help in organizing the event. I also want to thank all the volunteers for their help during the event and for sharing their experiences with the students.



...CONTINUED ON PAGE 4

ASCE 3rd Annual Engineers Day at East Valley Water District

By: Mohammad El Hocheimi, PE & Victor Elia, PE

...CONTINUED from PAGE 3

Special thanks to EVWD and their staff for their help organizing and hosting E Day and for their above and beyond work to make the day so memorable for the students. We would like to give special thanks to Jeff Nolte, director of engineering and operation at the district, for sharing his experience and volunteering his time. We would also like to thank Kelly Malloy director of strategic services at the district for her help before and during the event, as well as Cecilia Contreras for her help in

coordinating the event and making the day memorable for the students. Thank you to all of the EVWD staff, operations and maintenance crews for their help during the day.



Finally, we want to thank the students and the teachers, without them the event wouldn't be a success and we hope to see just as many students next year, until then keep dreaming!

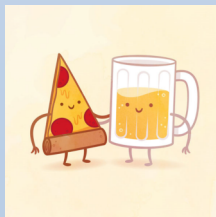


February Social Night at Skyland Ale Works Brewery

By: Chet Robinson, GE

ASCE hosted a social night on February 21 at Skyland Ale Works Brewery in Corona. We appreciate everyone who braved the cold and rain to make it out that evening. Skyland was the perfect after work hang out spot with an open seating area, great music, and a laid-back atmosphere. We had a good turnout with a fun group of engineers and guests. ASCE provided pizza for everyone to enjoy, and many of us enjoyed so many of the great beers that they have on tap.

The social night was a great way to renew friendships with our peers and meet new people in the industry. Thanks to everyone who came out. They also offer Trivia nights on most Tuesdays. Hopefully we can arrange another social at Skyland in the near future. We can't wait to do it again!



Aloha! From the 2019 WSBL

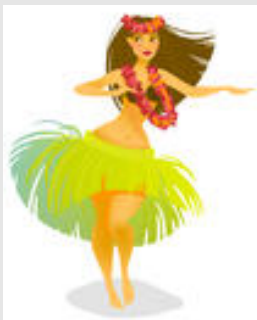
By: Victor Elia, PE

Workshops for Section & Branch Leaders (WSBL) Regions 8 & 9 conference were held on March 8-9 in Honolulu, Hawaii this year! President Jeff, Past President Melissa and Vice-President Victor attended along with two members of Riverside/San Bernardino YMF, LA Section Leaders and four Cal Poly Pomona students representing the student chapter. Not only was the location awesome this year but the conference was quite interesting!



ASCE Board Members Jeff Meiter and Victor Elia at a workshop

Topics ranged from ASCE's global purpose, mission and vision, to local a Region 9 session, to topics on communication in the workplace, emergency hazard inspections, K-12 outreach and even engineering ethics. Multiple speakers presented during the conference including a very unique public speaker from Hawaii that explained the meaning of "Aloha" and what it means to the people of Hawaii. The LA Section also hosted a wonderful dinner at the Tiki Bar Restaurant along the beach in Waikiki overlooking the sunset. Next year's conference is in San Francisco, CA Jan 24-25 and 2020 National ASCE Conference is in Anaheim, CA so we hope to attend with a good group from our branch membership. I hope to see you at the next conference.



ASCE Board Members at LA Section Dinner



All ASCE YMF Members who attended the WRYMC



ASCE Board Members with ASCE SB/R YMF



12645 6th Street, Rancho Cucamonga, CA 91739
PO Box 2470 Chino Hills, CA 91709
Phone: (909) 993-1500 Fax: (909) 993-1510

Quality Products for Healthy Soil

2019 ASCE I.E. YMF Tour 04/10/2019

Venue:

Inland Empire Regional Composting Facility (IERCF)

<https://www.ierca.org/>

Address/Entrance:

*12645 6th Street
Rancho Cucamonga*



- BAGS OF COMPOST ARE AVAILABLE FOR PICK UP AT NO CHARGE
- TOUR WILL BEGIN IN THE ADMIN BUILDING.
- A VAN WILL DRIVE 6 ATTENDEES THROUGH THE BUILDING AT A TIME.
 - Fully Enclosed 410,000 Sq. Ft. Building situated on 24 acres
 - State-of-the-Art, subsurface aeration system (up to 800,000 cfm)
 - Up to 12 Air Changes per Hour in Composting Area
 - Biofilter (3 acres) for Odors and Air Emissions (per South Coast AQMD)
 - Automation of Fans for pile Aeration based on temperature probes
 - Variety of Automated Conveyor Systems
- Biosolids – 150,000 Tons/Year (75,000 each for LACSD and IEUA)
- Bulking Agents & Feedstocks (Manure, Green Waste, Etc.) – 60,000 Tons/Year

Paul Hofer
Chairman

Jon Blickenstaff
Vice Chairman

Grace Robinson Hyde
Director

Kirby Brill
Director

Margaret Finlay
Director

Jasmin A. Hall
Director



ASCE San Bernardino / Riverside Branch & Institute of Transportation Engineering Joint meeting

Autonomous Vehicles - What's the Latest?

Thursday, April 18, 2019

11:30 AM – Social hour

12:00 PM – lunch served

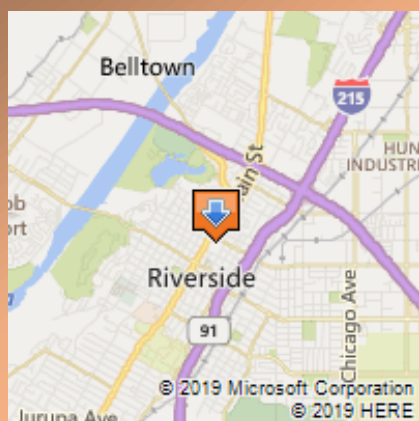
1:00 PM – meeting end

ASCE members - \$35

Government employees - \$30

ASCE Life members / Students - \$25

Non-members - \$40



Marco Anderson
Southern California
Associate Governments

Riverside Convention Center
3637 5th Street, Riverside, CA 92501

<https://events.r20.constantcontact.com/register/eventReg?oeidk=a07eg7jd9848cf7d972&oseq=&c=&ch=>



**2018-2019
BOARD OF DIRECTORS**

President

Jeff Meiter, P.E., L.S.
Valued Engineering, Inc.
(909) 982-4601
jeff@valued-eng.com

President-Elect

Chet Robinson, P.E., G.E.
Geocon, Inc.
(951) 304-2300
robinson@geoconinc.com

Vice President

Victor Elia, P.E., QSD
KWC Engineers
(951) 734-2130
victor.elia@kwceengineers.com

Treasurer

Entcho Anguelov, P.E.
Riverside County Flood Control
and Water Conservation District
(951) 955-1234
eanguelo@rivco.org

Newsletter Editor

Mitzi Sepulveda, EIT
Albert A. Webb Associates
(951) 248-4280
mitzi.sepulveda@webbassociates.com

Secretary

Emily Sipes, EIT
Rick Engineering Company
(951) 782-0707
esipes@rickengineering.com

Past President

Melissa Barbosa, P.E.
Azusa Light and Water
(626) 812-5173
mbarbosa@ci.azusa.ca.us

**GENERAL MEETING
PUBLIC OUTREACH**

Do you have a project that the surrounding neighbors or community is questioning, publicly commenting about or are politically involved with?

Please join the San Bernardino and Riverside Counties Branch of ASCE for a presentation on Public Outreach for public and private projects. Whether your project is in the preliminary phase, going through the CEQA process, final engineering the details or gearing up for construction, this presentation will help guide you on:

- How to reach out to the community using strategic communication
- How to utilize social media to answer questions and concerns regarding the project to gain a positive public outlook
- Who can help you or your client to manage the public relations/political affairs side of your project
- Why should engineers be involved with public outreach?



Special Guest Speakers include:

Kenneth, W. Crawford, Jr. – founder/owner of KWC Engineers

Liz Hansell – managing partner of The Dolphin Group

Register early to guarantee your spot. Hope to see you there!

Date: Thursday, May 16, 2019
Time: 11:30 AM – 1:00 PM
Location: Riverside Convention Center
Cost: \$35 ASCE Members w/ RSVP
\$30 Government Employees w/ RSVP
\$25 ASCE Life Members & Students w/ RSVP
\$40 Non-Members / Walk-Ins / No RSVP

Register: [Click Here!](#)

Additional Info: Victor Elia, PE
Victor.Elia@KWCEngineers.com



San Bernardino & Riverside Counties Branch

FOUNDED 1953

**2018-2019
BOARD OF DIRECTORS**

President

Jeff Meiter, P.E., L.S.
Valued Engineering, Inc.
(909) 982-4601
jeff@valued-eng.com

President-Elect

Chet Robinson, G.E.
Geocon, Inc.
(951) 304-2300
robinson@geoconinc.com

Vice President

Victor Elia, P.E.
KWC Engineers
(951) 734-2130
victor.elia@kwceingineers.com

Treasurer

Entcho Anguelov, P.E.
Riverside County Flood Control
and Water Conservation District
(951) 955-1234
eanguelo@rivco.org

Newsletter Editor

Mitzi Sepulveda
Albert A. Webb Associates
(951) 686-1070
mitzi.sepulveda@webbassociates.com

Secretary

Emily Sipes
Rick Engineering Company
(951) 782-0707
esipes@rickengineering.com

Past President

Melissa Barbosa, P.E.
Azusa Light & Water
(626) 812-5173
mbarbosa@ci.azusa.ca.us

ANNUAL AWARDS BANQUET

Please join the San Bernardino and Riverside Counties Branch of ASCE at the Annual Awards Banquet. Come celebrate the accomplishments of the Inland Empire engineers, your colleagues, firms, and agencies that are making positive impacts throughout the Inland Empire.

This year we will recognize several remarkable engineers, amazing projects and awarding scholarships to our local university students.

You won't want to miss this year's festivities! Hope to see you there!

Date: **Thursday, June 27, 2019**

Time: **5:30 PM – 8:00 PM**

5:30 PM – 6:30 PM Reception & Hors D'oeuvres (cash bar)

6:30 PM – 8:00 PM Dinner and Program

Location: Riverside Convention Center
3637 5th Street, Riverside CA

Cost: \$60 ASCE Members w/ RSVP
\$40 Government Employees w/ RSVP
\$40 ASCE Life Members & Students w/ RSVP
\$75 Non-Members / Walk-Ins / No RSVP
*Parking is **FREE** in the Main Convention Center Lot
(enter at 3rd Street and Main Street)

Register: [CLICK HERE](#)

Deadline: *Please RSVP by June 7, 2019*

Questions: Melissa Barbosa
(626) 812-5173
mbarbosa@ci.azusa.ca.us



LOS ANGELES SECTION, REGION 9

San Bernardino & Riverside Counties Branch

FOUNDED 1953

SPONSORSHIP FORM

This year's banquet promises to attract the firms, agencies, and people who have helped shape the Inland Empire. By sponsoring the event, your company will be featured in the Awards Program and in the ASCE Newsletter. Your sponsorship will help to fund next year's ASCE Annual Student Scholarships. The breakdown of benefits is as follows:

Platinum Sponsor - \$1000

- Reserved Table for 10
- Mention at Dinner
- Mention and Logo in the ASCE Newsletter
- Listing on the Event Program

Gold Sponsor - \$500

- Reserved Seating for 5
- Mention at Dinner
- Mention and Logo in the ASCE Newsletter
- Listing on the Event Program

Silver Sponsor - \$250

- Reserved Seating for 2
- Mention at Dinner
- Mention and Logo in the ASCE Newsletter
- Listing on the Event Program

Student Sponsor - \$200

- Reserved Seating for 6 students
- Mention at Dinner & Program

Sign Me Up!

I want to be a part of the ASCE San Bernardino and Riverside Counties Branch Annual Awards Banquet, take advantage of the promotional opportunities afforded to me as a selected sponsor, and help support the Branch's student scholarship program.

Platinum Gold Silver Student

Company: _____

Contact Name: _____

Address: _____

Phone: _____

Fax: _____

Email: _____

Please email this form and a high-resolution copy of your company logo to: Entcho Anguelov, Branch Treasurer

Phone: (951) 955-1234 **Email:** eanguelo@rivco.org

Sponsorships will be invoiced for payment by ASCE Sb/Riv Branch



LOS ANGELES SECTION, REGION 9

San Bernardino & Riverside Counties Branch

FOUNDED 1953

2018-2019 Outstanding Achievement Awards

The San Bernardino & Riverside Counties Branch of the American Society of Civil Engineers has an annual awards program to recognize local outstanding projects and engineers. Nominations must be submitted online or postmarked by **May 2, 2019**.

Applications may be submitted online at the Branch's Awards Portal:

<http://asce-sbriv.org/awards/>

or mail completed nomination forms and supporting information to:

San Bernardino/Riverside Branch ASCE
Annual Awards Program
Attn: Melissa Barbosa, PE, Past President
729 N. Azusa Ave.
Azusa, CA 91702

Here is the link for the **candidate awards**:
<https://goo.gl/forms/3OBJ6MugAqhmvtby2>

Here is the link for the **project awards**:
<https://goo.gl/forms/FJwSlvRRBkUZzJZl2>

Award winners will be notified by May 23, 2019. The awards banquet will be held at the Riverside Convention Center on June 27, 2019.

All nomination forms and supporting documents are the property of the San Bernardino & Riverside Counties Branch and may be used at the Branch's discretion. Submittals will not be returned to the applicant. For additional information, please contact Melissa Barbosa at (626) 812-5173 or mbarbosa@azusaCA.gov

The Branch has established the following awards for 2018-2019:

Candidate Awards

These awards recognize individuals who best exemplify the civil engineering profession. The nominees shall be worthy of acknowledgement through their exemplary professional conduct, reputation, achievement, and contribution to the image of the civil engineer.

Each nominee must be an ASCE National member and a member of the San Bernardino & Riverside Counties Branch. The nominee must work and/or reside within the boundaries of the Branch for a minimum of 18 months prior to the award. Past recipients of a specific candidate award are not eligible to be nominated in that same category.

Selection of the award shall be based on the following criteria: education and professional qualifications such as degrees held, projects completed, patents, publications, presentations, and teachings, professional qualities including society affiliations, offices held, leadership skills, professional conduct, reputation for service, character, integrity, contribution to the image of the civil engineer through community service, volunteer work, public education, honors and awards.



LOS ANGELES SECTION, REGION 9

San Bernardino & Riverside Counties Branch

FOUNDED 1953

All applications for the candidate awards shall include the following (total application packet limited to five-pages): completed award program entry form, description of how the individual meets the above listed criteria (two-page limit), biography or resume (one-page limit), copies of the newspaper or journal articles and other supporting information, if applicable.

Outstanding Civil Engineer in the Public Sector

This award is given on the basis of outstanding engineering achievement. Consideration shall be given to the Engineer that has exhibited professional achievement and has made significant impact to the field of civil engineering. This impact may be through professional activities, ASCE involvement, research and innovative engineering solutions. This award is intended to be awarded to individuals employed by a public organization. The nominee for this award shall be a Registered Professional Engineer and be a member of ASCE San Bernardino-Riverside.

Outstanding Civil Engineer in the Private Sector

This award is given on the basis of outstanding engineering achievement. Consideration shall be given to the Engineer that has exhibited professional achievement and has made significant impact to the field of civil engineering. This impact may be through professional activities, ASCE involvement, research and innovative engineering solutions. This award is intended to be awarded to individuals in the private sector. The nominee for this award shall be a Registered Professional Engineer and be a member of ASCE San Bernardino-Riverside.

Outstanding Younger Civil Engineer

This award is given on the basis of outstanding engineering achievement. Consideration shall be given to the Engineer that has exhibited professional achievement and has made significant impact to the field of civil engineering. This impact may be through professional activities, ASCE involvement, research and innovative engineering solutions. This award is intended for individuals age 35 years or younger as of December 31 of the year of the award. The nominee for this award shall be a Registered Professional Engineer and be a member of ASCE San Bernardino-Riverside.

Outstanding Civil Engineering Student

This award is given on the basis of outstanding engineering achievement. Consideration shall be given to the engineering student that has exhibited professional achievement and has made significant impact to the field of civil engineering. This impact may be through professional and academic activities, ASCE involvement, research and innovative engineering solutions. This award is intended for full time Student Members of ASCE San Bernardino-Riverside and an active member of the Cal Poly Pomona or Cal Baptist University ASCE Student Chapter. The nominee for this award may be a Sophomore, Junior or Senior and enrolled in an ABET accredited Civil Engineering Program.

Outstanding Civil Engineer in Community Service

This award is given on the basis of outstanding community service. Consideration shall be given to the Engineer that has exhibited professional achievement and has made significant impact to the community and ASCE. This impact may be through committee involvement, political and social involvement. This award is intended to be awarded to individuals engaged in service beyond the field of civil engineering. The nominee



LOS ANGELES SECTION, REGION 9

San Bernardino & Riverside Counties Branch

FOUNDED 1953

for this award be a member of ASCE San Bernardino-Riverside.



LOS ANGELES SECTION, REGION 9

San Bernardino & Riverside Counties Branch

FOUNDED 1953

Outstanding ASCE Faculty Advisor

Presented to faculty member or a lecturer that best exemplify the civil engineering profession. The nominees shall be worthy of acknowledgement through their exemplary professional conduct, leadership, reputation, achievement, and contribution to the image of civil engineering. The nominee must be active with the ASCE students at an ABET accredited Civil Engineering program in the ASCE San Bernardino-Riverside. The nominee for this award should be a member of ASCE San Bernardino-Riverside.

Outstanding ASCE Life Member

Presented to an individual who is an active member of ASCE that has achieved Life Member status with outstanding professional qualities, reputation of engineering leadership and accomplishments, and continues to be a valuable resource to the Branch by contributing their expertise and experiences to our members. This award recognizes individuals who best exemplify the civil engineering profession. The nominees shall be worthy of acknowledgement through their exemplary professional conduct, reputation, achievement, and contribution to the image of the civil engineer. The candidate shall have technical experience, community service, engineering accomplishments and ASCE involvement. The nominee for this award should be a member of ASCE San Bernardino-Riverside.

Outstanding Civil Engineer in Service to ASCE Branch

The nominees shall be worthy of acknowledgement through their exemplary professional conduct, leadership, reputation, achievement, and contribution to the image of civil engineering. The nominee must be an Officer for the San Bernardino-Riverside Branch for the year the award is given. Presented to an engineer with outstanding service to ASCE Branch. The nominee for this award should be a member of ASCE San Bernardino-Riverside.

Outstanding Civil Engineer in Service to ASCE YMF

The nominees shall be worthy of acknowledgement through their exemplary professional conduct, leadership, reputation, achievement, and contribution to the image of civil engineering. The nominee must be an Officer for the San Bernardino-Riverside Younger Member Forum for the year the award is given. Presented to an engineer with outstanding service to ASCE Younger Member Forum. The nominee for this award should be a member of ASCE San Bernardino-Riverside.

Project Awards

Outstanding Civil Engineering Projects

These awards recognize the engineering efforts of both government organizations and private sector consultants in the completion of outstanding civil engineering projects. This award is intended to recognize projects that further advance the field of civil engineering through innovative concepts, research, and materials. Some of the criteria that can be used may include innovative approaches to funding, the use of advanced technologies and materials, and the immensity of the project.

Projects will be evaluated based on the following criteria: innovative design and/or construction benefit to the



LOS ANGELES SECTION, REGION 9

San Bernardino & Riverside Counties Branch

FOUNDED 1953

community, project complexity and/or challenges, impact on physical environment, unique operation or maintenance, aesthetics. Any civil engineering project currently in use and completed within the previous 18 months is eligible. The project must be located within the boundaries of the San Bernardino & Riverside Counties Branch.

Project nominations must select the category or categories that best fit the project. If you aren't sure go ahead and check it anyways. The Branch can decide if they agree with the category that you choose, so it's better if you choose a category even if it is a bit of a stretch. Please select all that apply. This will also allow us to submit your project to the section and region for consideration; successful projects at the Branch level get promoted up to the Los Angeles Section for selection, then to Region 9, and potentially to National within the same year in a successive trickle up fashion. This provide a great change at recognition at many levels!

All applications for the Outstanding Civil Engineering Project Awards shall include the following: completed award program entry form, description of the project and how it meets the above listed criteria (two-page limit), at least one color photograph or color photocopy of the project, copies of the newspaper or journal articles about the project, if applicable.

(NOMINATION FORM ATTACHED)



LOS ANGELES SECTION, REGION 9

San Bernardino & Riverside Counties Branch

FOUNDED 1953

Outstanding Candidate Awards *(Please complete one form for each nomination)*

Award Category for Consideration (please check [✓] one)

<input type="checkbox"/>	Outstanding Civil Engineer in the Public Sector	<input type="checkbox"/>	Outstanding Civil Engineering Student	<input type="checkbox"/>	Outstanding ASCE Life Member
<input type="checkbox"/>	Outstanding Civil Engineer in the Private Sector	<input type="checkbox"/>	Outstanding Civil Engineer in Community Service	<input type="checkbox"/>	Outstanding Civil Engineer in Service to ASCE Branch
<input type="checkbox"/>	Outstanding Younger Civil Engineer	<input type="checkbox"/>	Outstanding ASCE Faculty Advisor	<input type="checkbox"/>	Outstanding Civil Engineer in Service to ASCE YMF

Name: _____

Title: _____

Employer: _____

Address: _____

Phone: _____ E-Mail: _____

On a separate sheet of paper, please provide the following information about the nominee; education and professional registration, work experience, professional and society affiliations, patents, publications and presentations, community service and public education, honors and awards.

(The following must be completed with each nomination)

THIS NOMINATION HAS BEEN SUBMITTED BY:

Name: _____

Title: _____

Employer: _____

Address: _____

Phone: _____ E-Mail: _____

**All nomination forms and supporting documents are the property of the San Bernardino & Riverside Counties Branch and may be used at the Branch's discretion. Submittals will not be returned.*



LOS ANGELES SECTION, REGION 9

San Bernardino & Riverside Counties Branch

FOUNDED 1953

Outstanding Project Awards

(Please complete one form for each nomination)

OUTSTANDING CIVIL ENGINEERING PROJECT:

Award Category for Consideration (please check [✓] all that apply)

<input type="checkbox"/>	Airports & Ports Project	<input type="checkbox"/>	Environmental Engineering Project	<input type="checkbox"/>	Structural Engineering Project
<input type="checkbox"/>	Architectural Engineering Project	<input type="checkbox"/>	Flood Management Project	<input type="checkbox"/>	Sustainable Engineering Project
<input type="checkbox"/>	Bikeways & Trails Project	<input type="checkbox"/>	Geotechnical Project	<input type="checkbox"/>	Transportation Project
<input type="checkbox"/>	Bridge Project	<input type="checkbox"/>	Historical Renovation Project	<input type="checkbox"/>	Urban or Land Development Project
<input type="checkbox"/>	Community Improvement Project	<input type="checkbox"/>	Parks & Recreation Project	<input type="checkbox"/>	Water Project
<input type="checkbox"/>	Construction Project	<input type="checkbox"/>	Roadway & Highway Project	<input type="checkbox"/>	Water/Wastewater Treatment Project
<input type="checkbox"/>	Energy Project	<input type="checkbox"/>	Small Project	<input type="checkbox"/>	Other (Please Explain in Attachments)

Project Name: _____

Project Manager or Responsible Individual: _____

Project Address or Location: _____

Project Owner Name (Company): _____

Project Owner Contact Person: _____

Address: _____

Phone: _____ E-Mail: _____

On a separate document, please provide the following: 1) Description of the project; 2) Justify how the project stands out among others and why it is worthy of an award (considering previously mentioned criteria); and 3) Specify any relationships generated, obstacles to overcome and other accolades received. Include a color photograph of the project and any articles from trade journals or newspapers about the project.

(The following must be completed with each nomination)

THIS NOMINATION HAS BEEN SUBMITTED BY:

Name: _____

Title: _____

Employer: _____

Address: _____

Phone: _____ E-Mail: _____

**All nomination forms and supporting documents are the property of the San Bernardino & Riverside Counties Branch and may be used at the Branch's discretion. Submittals will not be returned.*

When it's over,
it's over! Don't
worry. ASCE YMF
still loves you.

PE BOOTH AND HAPPY HOUR SOCIAL EVENT

Visit www.ascelasection.org to
connect to all of the YMF's

Los Angeles YMF
Orange County YMF
San Bernardino-Riverside YMF
Santa Barbara/Ventura YMF
Southern San Joaquin YMF
San Luis Obispo YMF

ASCE YMF MEMBERSHIP BOOTH

When: Friday, April 5, 2019

Where: Pomona Fairplex

Time: 6AM - 8AM & 12PM - 1pm

*Be sure to grab your free ASCE goodie!

POST PE EXAM HAPPY HOUR

Where: INNOVATION BREW WORKS

3650 W. TEMPLE AVE

POMONA, CA 91768

Time: After the PE Exam (5-8pm)

Cost: Free

For more info, contact Christian Dy, SB/R YMF Recruitment Chair at
christiandy.asce@gmail.com or (818) 477-7182

ASCE San Bernardino Riverside Board of Directors

2018-2019 BOARD OF DIRECTORS



President

Jeff Meiter, P.E.
Valued Engineering, Inc.
(909) 982-4601
jeff@valued-eng.com



President-Elect

Chet Robinson, P.E., G.E.
Geocon
(951) 304-2300
robinson@geoconinc.com



Geotechnical Committee Chair
Paul Kim, P.E., P.G. CEG.
pkim@albus-keefe.net



Vice President

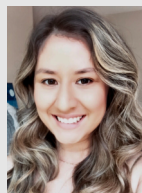
Victor Elia, P.E.
Valued Engineering, Inc.
(909) 982-4601
jeff@valued-eng.com

Storm Water Committee Chair
Bill Flores, Jr., P.E., CPSWQ,
QSP/D, ToR
HDR, Inc.
(951) 320-7311
bill.flores@hdrinc.com



Treasurer

Entcho Anguelov, P.E.
Riverside County Flood Control
and Water Conservation District
(951) 955-1234
eanguelo@rivco.org



Newsletter Editor

Mitzi Sepulveda, E.I.T.
Webb Associates
(951) 686-1070
mitzi.sepulveda@webbassociates.com



Secretary

Emily Sipes
Rick Engineering Company
(951) 782-0707
esipes@rickengineering.com



Past President

Melissa Barbosa, P.E.
Azusa Light & Water
(626) 812-5173
mbarbosa@ci.azusa.ca.us



YMF President

Jing Yang, P.E.
WSP | USA
(951) 826-5655
cquach@riversideca.gov

**Want to advertise an
employment opportunity?**

Contact the Newsletter Editor
Mitzi Sepulveda
mitzi.sepulveda@webbassociates.com

Professional Directory

Civil - Water Resources - Inspection - Land Surveying
Construction Management - Program Management
Municipal Consulting - Grant Writing - Funds Acquisition




2305 Chicago Avenue - Riverside - CA - 92507
Ph. (951) 680-0440 - Fax (951) 680-0490
www.tkeengineering.com



**Water • Wastewater • Recycled Water • Storm Water
Planning • CEQA/NEPA • Surveying
Design • Construction Management • Inspection**

Engineering the Details, Because Details Matter

Riverside, CA 92501 • 951-684-6900 office
www.kriegerandstewart.com



"Engineering with values and integrity"

CIVIL ENGINEERING • LAND SURVEYING • LAND PLANNING

180 N. Benson Avenue, Suite "A"
Upland, CA 91786
Office: (909) 982-4601
Cell: (909) 927-7347
jeff@valued-eng.com
www.valued-eng.com

Jeff D. Meiter, LS, RCE
President

Civil Engineering & Planning Since 1945

ALBERT A.
WEBB
ASSOCIATES

Corporate Headquarters
3788 McCray Street | Riverside, CA 92506
T: 951.686.1070 | F: 951.788.1256

Desert Region
36951 Cook Street #103 | Palm Desert, CA 92211
T: 760.568.5005 | F: 760.568.3443
www.webbassociates.com



Leighton Consulting, Inc.

866-LEIGHTON
Thomas C. Benson, Jr., PE, GE | President & CEO

Irvine
Los Angeles
Palm Desert
Rancho Cucamonga
San Diego
Santa Clarita
Temecula
Ventura

www.leightongroup.com

Geotechnical | Environmental | Testing and Inspection



Merrell Johnson
COMPANIES

Apple Valley Office
22221 US Hwy 18
Apple Valley, CA 92307
(760) 240-8000
Fax (760) 240-1400

Barstow Office
128 E. Fredricks St
Barstow, CA 92311
(760) 256-2068
Fax (760) 256-0418

Email: info@merrelljohnson.com

**CHJ CONSULTANTS IS NOW
A TERRACON COMPANY!**



CHJ Consultants
A Terracon COMPANY

1355 E. Cooley Drive | Suite C | Colton, CA 92324
(909) 824-7311 | chjconsultants.com

Environmental ■ Facilities ■ Geotechnical ■ Materials



CASC
Engineering and Consulting

- Land Planning
- Civil Engineering
- Surveying & Geomatics
- Water Resources
- Landscape Architecture
- Environmental Engineering

CELEBRATING 25 YEARS 1993-2018

cascinc.com

Business Card Ad

Contact ASCE Board member
Chet Robinson, PE, GE
Branch Treasurer
robinson@geoconinc.com



Project X Corrosion
MBE • DBE • SBE • SBA 8(a)

Soil Testing • Metallurgy Lab
Corrosion Control Consulting
Thermal & Forensic Engineering

Ed Hernandez, PE, NACE CCT
info@projectxcorrosion.com



Phone: 213-928-7213 • ProjectXcorrosion.com

ASCE CONTINUING EDUCATION

Check out all of the content available from ASCE. When ordering be sure to use the Promo Code below so that the branch will receive 20 percent of the gross revenue from the registration. This helps the branch to reduce member costs, provide better activities and give out more scholarships for the benefit of the local engineering community.

WEBSANBRIBRA

http://www.asce.org/continuing_education/

Be sure to check out the career opportunities at ASCE's Career page at

<http://www.asce-sbriv.org/careers-1.html>

Calendar of Upcoming ASCE Events

April 10, 2019	ASCE SB/R YMF Tech. Tour with Inland Empire Regional Composting Authority in Rancho Cucamonga
April 18, 2019	Joint Meeting with ITE at the Riverside Convention Center - "Autonomous Vehicles-What's the Latest?"
April/May 2019	Joint Tech. Tour with ASCE Santa Barbara - Ventura Chapter in Santa Barbara (Details TBD)
May 16, 2019	General Lunch Meeting at the Riverside Convention Center - "Public Outreach"
May 18, 2019	GEMS Fundraising Dinner
June 27, 2019	Annual Awards Banquet at the Riverside Convention Center

Membership Information

Types of Membership and Annual Dues (National)

Students: FREE

Associate Member: \$50 per year of Baccalaureate degree and first year after, then incremental increases to \$225 over five years.

Member: \$225

Affiliate: \$225

Section (Branch) Dues: \$55

National ASCE student membership is now FREE! Those who have chapters or clubs still must be a member of them before joining National. Log onto <http://www.asce.org/join/> fill out the short application or call 1-800-548-ASCE (2723) and instantly become a member of ASCE.

Online membership renewal is available! Go to <http://www.asce.org/membership-communities/> You will need your membership number. All payments must be made with a major credit card. An e-receipt is transmitted to the member upon completion of the transaction.

Newsletter Information

Publisher:

ASCE San Bernardino-Riverside Counties Branch

P.O. Box 1541

Riverside, CA 92502-1541

Typesetting and Layout: Mitzi Sepulveda, EIT

Newsletter Editor:

Mitzi Sepulveda, EIT

mitzi.sepulveda@webbassociates.com

Identification Statement:

ASCE San Bernardino - Riverside Counties Branch

Newsletter is published monthly.

Subscription Rate: \$55 (included in section dues)

Advertisement Rates:

Professional Directory: \$250 per business card (10 issues)

Full page ad: \$235 per issue

1/2 page ad: \$125 per issue

1/4 page ad: \$75 per issue

Advertisement Information:

To place ads please contact the editor. Payments are due 30 days from the date of publication.

