

President's Message

Chet Robinson, PE, GE



Inside this issue

Newsletter Editor's Message	1
June Awards Dinner	2
Ritual Brewery Tour	7
Upcoming Events.	
2019 Annual LA Section Meeting, Of- ficers Installation m & Awards Lunch-	8
2019 GEMS STEMfest	9
Annual Golf Tournament	10
November Technical Tour	11
WQMP Workshop	12
ASCE Board of Directors	14
Professional Directory	15
Employment/Calendar	16
Membership Information	17
Newsletter Information	17

Hello ASCE Members,

The season is changing in Southern California and so is the ASCE board. We have a new year for the ASCE San Bernardino/Riverside Counties branch starting in October, and we are planning to make it a great one! We recently took time on a Saturday to plan out events over the next twelve months. We have a series of membership lunches planned, technical tours, social events, E-week activities, WQMP training, our annual awards banquet, and our scholarship golf tournament. We are working to make the events valuable to everyone, and we would appreciate your input. Please let us know if there is an event you would be interested in or a topic that you would like to learn about.

If you haven't signed up yet for the 5th annual scholarship golf tournament, please do so quickly to reserve your spot. We are returning to the Trilogy golf club just south of the City of Corona. The course is challenging and beautiful. Come spend the day with your peers whether you are a golfer or not. In addition to playing the course, we will have breakfast, lunch, and a raffle for you to enjoy. It is a great way to network with your peers, and of course support our branch scholarship for civil engineering students. Many of these students will be there volunteering at the event. They would love to hear your advice and career experience, and maybe you will meet someone who could be the next engineer at your firm!

I recently returned from Virginia where I attended a forum for ASCE's incoming presidents and governors. It was a great chance to meet people from all over the country and the world who are passionate about ASCE. We learned from ASCE about all of the resources that they have available to us - and it is a lot! I hope to share those resources with our branch membership throughout the year. Please remember to pay your membership and section dues as the calendar year comes to an end. Our local branch is funded by membership dues, so keep current so that we can continue to support our local Civil Engineers and put on amazing events. We created an ASCE San Bernardino/Riverside Branch LinkedIn page to make it easier for you to attend such events. Follow us if you are actively using it. We will be broadcasting events through there as well.

I also want to let you know many our award winning projects from our Annual Banquet this past June made it to the final list of award winners for 2019 LA Section. I encourage everyone to attend, especially those who of you who worked on these projects. John Rogers will be the Outstanding Life Member and I would like him to have a full house. If you know any firms who participated in winning projects, please let them know sponsorships are available.

Sincerely,
Chet Robinson, PE, GE
San Bernardino and Riverside Counties Branch President
crobinson@cityofmenifee.us



JUNE AWARDS DINNER

By: Melissa Barbosa, PE

We had a great annual Awards Dinner on June 27, 2019! It was a fun evening and a great opportunity to recognize the hard work & dedication of our fellow engineers. Awards were given to outstanding engineers and exceptional engineering projects within San Bernardino and Riverside Counties. Award recipients will be entered into the Los Angeles Section Awards program.



At the Awards Dinner we installed the new ASCE Board for FY 2020, Chet Robinson from Geocon Inc. will be the new ASCE President in October. During dinner we had a distinguished guest motivational speaker Kaala Souza from Hawaii. **Kaala was dynamic!** He discussed the importance to **THINK NUI**, and to be **PONO** with our colleagues. If you missed him, check out his book Pono, it's worth reading.



Civil Engineers are awesome, we are definitely the invisible super heroes! All night we celebrated Engineers and Projects and all the work we have accomplished in the San Bernardino-Riverside area. It's nice that we came together to recognize our accomplishments in the Industry. Awards were presented to individuals who best exemplified the engineering profession and to public and private engineering projects demonstrating innovative design, project complexity, benefit to the community, sustainable projects, unique operations and outstanding aesthetics. Congratulations to all the Award Winners!

We also handed out \$5,000 in Scholarships to exceptional students who have demonstrated a commitment to engineering and ASCE. Scholarships were awarded to deserving civil engineering students at Cal Poly Pomona and California Baptist University. These scholarships are a critical function of our ASCE SBR Branch Values. All funds received by the Branch, above the cost of our events, are dedicated to promoting and advancing the engineering profession. This includes event registration, corporate sponsorships, and our annual golf tournament revenues.

Our scholarship recipients this year included:

STUDENT SCHOLARSHIP AWARDS
Celeste Chan – California State Polytechnic University, Pomona
Nathan Sells – California Baptist University
Nathaniel Small - California Baptist University
Patrick Lau – California Baptist University
Valerie Sarmiento - California State Polytechnic University, Pomona



...CONTINUED from PAGE 2

These scholarships continue to allow our membership to invest in and stay connected with the bright future generation of engineers that are certain to make an impact in our profession.



John Rogers is an Outstanding Life Member to ASCE. I've had the privilege to work alongside him at the ASCE Branch Board level. John is a great mentor, a wealth of knowledge, a supreme sailor and leader in the industry. John is a former past president at the ASCE LA Section level and continues to support ASCE on a daily basis. Thank you for your service John!

Kristina Campuzano is a recent Student Graduate from Cal Poly Pomona. She served as ASCE Cal Poly Student Chapter President. While studying in school, she interned at Turner Construction.



Mohammad lead Engineers Day 2019 at EVWD over 100 students from different schools were able to come to the district and learn about engineering, EVWD District and about water & sewer. Mohammad maximizes his time between full time work at WSP, finishing his masters and volunteering with YMF where

he serves as the treasurer.



Julianna Adams' passion and personal mission has been to open the doors to the wide world of science, mathematics, technology and engineering for young people, particularly girls and young women who may have been unaware of the opportunities available to them. She has made extraordinary efforts to extend her influence as widely as possible, both through ASCE and through United Way. She organized a Youth in Government day through the District, and continuing to mentor the District's student interns and new employees. To enhance her ability to reach out to the Hispanic Community and to encourage increased academic participation by girls and young women, in April 2019 Ms. Adams completed an eight-week "Community Leadership Certificate Program", presented jointly by the Office of Civic and Community Engagement at University of La Verne College of Law and the Inland Empire Hispanic Leadership Council. Her class project for that class was a video aimed at enhancing financial literacy among young people.



Gustavo Gomez continues to lead K-12 student outreach to the ASCE Younger Members. He has implemented hands on activities for the students and has organized multiple high school visits to speak to students about engineering and encourage STEAM outreach.



Chet Robinson has been a great asset leading multiple technical speaker series events at the ASCE Branch level. Chet has coordinated numerous technical tours to allow ASCE members to see the latest technology resources and projects constructed in the industry. Including the lessons learned with each unique project.



Matt Webb is the President/CEO and a member of the Board of Directors of Albert A. Webb Associates. Matt has served as an expert witness in matters pertaining primarily to civil engineering practices. As an advocate for Inland Southern California, Matt spends much of his time representing the citizens of our region on a variety of issues related to transportation, the environment, planning, and civil engineering before local, state, and national representatives. With nearly forty years of experience, Matt is an invaluable resource providing leadership at WEBB, our profession, and the community.



Edwin Quinonez has proven himself time and time again at RCFC&WCD as an extraordinarily proficient Engineer and Man-

ager. He has progressed through the ranks of his organization, advancing from the entry level fresh out of college to his current supervisory role in just 15 years.

The accomplishments and impeccable work ethic of these individuals has not gone unnoticed. Each has shown a consistent commitment to becoming a better civil engineering, while giving back to the community and the civil engineering profession. We are lucky to have these individuals in our industry.

PROJECT AWARDS	
PROJECT OF THE YEAR - ROAD & HIGHWAY	I-15 Temecula Parkway Interchange - City of Temecula - Michael Baker International
ENVIRONMENTAL ENGINEERING PROJECT	Meadowview Stream Restoration - Riverside County Flood Control and Water Conservation District
SUSTAINABLE ENGINEERING	Ontario Avenue Asphalt Rehabilitation - City of Corona - Pavement Recycling Systems, Inc
AIRPORTS AND PORTS	Hemet Ryan Airport Taxiway - CalFire & Riverside County - Gecon West, Inc.
COMMUNITY IMPROVEMENT	Villages of Terrassa - TRI Pointe Homes - KWC Engineers
LAND DEVELOPMENT	Merrill Gardens Rancho Cucamonga - DMG Corporation
ARCHITECTURAL ENGINEERING	Dennis and Carol Troesh Engineering Building - California Baptist University
FLOOD MANAGEMENT	California Street - City of Loma Linda
SMALL PROJECT	CASC Headquarters Building Commercial Site Low Impact Development - CASC Engineering and Consulting

Receiving top honors as Project of the Year is I-15 Temecula Parkway Interchange Project. The I-15 Temecula Parkway Interchange is located in the southern area of the City of Temecula, approximately 2.5 miles from the border between Riverside and San Diego counties. The interchange was originally constructed in 1975 as a diamond configuration with Front Street/SR-79. In 1998, the interchange ramps were widened and SR-79 was realigned to intersect with Front Street a short distance from the southbound off-ramp, which was slated for future improvements. At this time, Michael Baker International was retained by the City of Temecula to prepare a Project Study Report (PSR) to identify improvements that would eliminate existing interchange operational deficiencies which affected both the freeway mainline and local streets. Improvements were planned to accommodate future local growth consistent with the City's General Plan and regional growth in Riverside County. This was the beginning of a 20-year planning, design and construction process that culminated with the ribbon-cutting ceremony for the completed \$50 million interchange improvement project on November 27, 2018. The City's dedication to addressing a major source of congestion that had resulted in continuing degradation over the last twenty years helped facilitate the success of the recent interchange improvements. The City's long-range planning effort and collaboration with the County of Riverside, the Riverside County Transportation Commission (RCTC), Pechanga Tribe, Caltrans and FHWA resulted in improvements that will provide benefits for years to come.

...CONTINUED from PAGE 4

Environmental Engineering Project was awarded to Riverside County Flood Control and Water Conservation District. The Meadowview Stream Restoration Project was a collaborative stream rehabilitation and hydromodification mitigation project spearheaded by the Meadowview Community Association (MCA) to address severely incised and unstable stream banks, minimize associated erosion and water quality issues, and restore the native habitat. The Meadowview Restoration, consisted of approximately 1,200 feet of stream restoration using bio-engineering practices.

Receiving Sustainable Engineering Project of Year was Ontario Avenue Asphalt Rehabilitation in the City of Corona and Pavement Recycling Systems Inc. Cold In-Place Recycling (CIR) was used 100% existing 3-inches asphalt pavement with a 1.5-inch Asphalt Rubber Hot Mix Asphalt overlay. Project Benefits: Estimated cost savings of \$300,000 when compared to remove and replace methods. 8,950 tons of asphalt recycled and repave in place. 990 fewer trucks, 20% reduction in the project constructions schedule, thus reducing public inconvenience. 1,823 fewer barrels of oil used, 79% fewer carbon emissions, 77% reduction in energy required utilizing the CIR when compared to remove and replace methods, Life Cycle cost benefits, Re-utilization of legacy aggregates and binder in city asphalt assets.

Receiving Airports Project of the Year was the Hemet Ryan Airport Taxiway by CalFire, Riverside County and Geocon West Inc. The work included reconstruction of a vital taxiway that connects Calfire's fire fighting aircraft to the Runway at the Hemet Ryan Airport. Calfire is able to fight fires across much of Southern California from this airport. They have used the airport for this purpose since 1957. Prior to reconstruction, the taxiway was severely distressed. Reconstruction of the taxiway was conducted to current FAA design standards to provide a passable route for the fire fighting equipment.

Receiving Community Improvement Project of the Year was Villages of Terrassa by TriPointe Homes and KWC Engineers. This development in Corona created 146 single family dwelling units.

Receiving Land Development Project of the Year was Merrill Gardens Rancho Cucamonga by IMEG Corporation. Design and preparation of construction documents for a new assisted living and memory care facility located off Highland Ave in Rancho Cucamonga, California. The project site is a four-acre parcel subdivided out of a nine-acre property owned by Highland Avenue Community Church. As a method of raising funds

for the expansion of the church, and a means of contributing to the community, the church decided to break out a portion of their property for the Senior Community Development. IMEG prepared and recorded the two-parcel map to split the property.

Receiving Architectural Engineering Project of the Year was Dennis and Carol Troesh Engineering Building at California Baptist University. CBU's Engineering building is designed as a showcase for innovative technologies and learning spaces for STEM education.

Receiving Flood Management Project of the Year was California Street in the City of Loma Linda. The existing roadway was an off-set alignment. The California Street Widening Project consisted of construction of two additional lanes over a new box culvert. The location is the southeast corner of California Street and Redlands Boulevard in the Cities of Redlands and Loma Linda. The project included multiple utilities to be relocated with the road widening and Mission Creek channel modifications. Permitting and approvals were required from the U.S. Corp. of Engineers, U. S. Fish and Wildlife, San Bernardino County Flood Control District, the City of Redlands and the City of Loma Linda. Timely installation of the box culvert and roadway widening was critical as the location is opposite an elementary school. The extremely tight confines due to existing channel next to the roadway gave the contractor challenging conditions. The least impactful solution was to shut down the roadway for several weeks to provide worker safety and staging areas. Therefore, schedule became important to coordinate with the academic calendar. The excavation within the channel coincided with Native American cultural areas as well. The project was completed within the \$6M budget.

Lastly, the CASC Headquarters Building Commercial Site Low Impact Development by CASC Engineering and Consulting received the Small Project of the Year award. The Commercial Site Low Impact Development (LID) Best Management Practice (BMP) Retrofit project consisted of retrofitting a 1.7-acre commercial office site with a single tenant, CASC, in the city of Colton. Constructed in the 1980's, the commercial office site existed long before the mandate of Low Impact Development Best Management Practices (LID BMPs), and currently neither the City nor the Phase I MS4 Permit require a LID BMP retrofit for the site. As of August 2018, CASC has now completed a completely voluntary LID BMP retrofit of the office site and not only is it aesthetically pleasing, it also serves as a successful stormwater treatment BMP. CASC fully funded this project and CASC employees built and tested all retrofit components.

...CONTINUED from PAGE 5

Thank you to everyone who attended our 2019 San Bernardino-Riverside ASCE Annual Awards Dinner.

Thank you to our sponsors of the night! Platinum Sponsor Michael Baker International and Riverside Flood Control and Water Conservation District



PLATINUM SPONSOR

Michael Baker
INTERNATIONAL



GOLD SPONSOR

 **GEOCON**  **CASC**
Engineering and Consulting

SILVER SPONSOR

 **VALUED**
ENGINEERING, INC.

 **INLAND EMPIRE**
SURVEY & ENGINEERING, INC.
10000 W. 15TH STREET, SUITE 100, RIVERSIDE, CA 92504

 **ALBERT A.**
WEBB
ASSOCIATES

 **RIVERSIDE**
CONSTRUCTION
COMPANY, INC.



RITUAL BREWERY TOUR

By: Chris Casey, PE



ASCE hosted a social night on August 16th at Ritual Brewing Co. in Redlands. Ritual was the perfect after work hang out spot with open seating, great music, patio games, and a laid-back atmosphere. The event turnout was great with a fun group of engineers and guests. Ritual gave a behind-the-scenes tour of their 23,000 square foot brewhouse facilities and a breakdown of the beer making process. At the end of the tour Ritual gave tastings of their most popular beers for everyone to enjoy. Many of the attendees also enjoyed other great beers that Ritual currently had on tap.



The social night was a great way to renew friendships with our peers and meet new people in the industry. Thanks to everyone who came out and we hope to see you at our next event. Ritual Brewing also offer disc golf putting leagues for those who like a little friendly competition.





ASCE Los Angeles Section

Cordially Invites You to the

2019 Annual Meeting, Installation of Officers & Awards Luncheon

Date & Time:

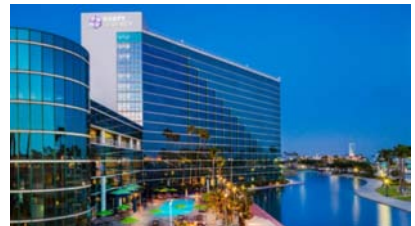
SATURDAY, OCTOBER 5, 2019 | 11:00 am - 2:00 pm

Cocktail Hour: 11:00 am - 11:45 am

Lunch served promptly at 12:00 pm

Location:

HYATT REGENCY LONG BEACH
200 South Pine Avenue
Long Beach, CA 90802



Ticket Costs:

Members & Guests - \$75 per person

Life Members - \$50 per person

Students - \$50 per person

Menu Options:

Sustainable Grilled Salmon

New York Strip

Butternut Squash Ravioli
(Vegan/Vegetarian)

REGISTER

**SPONSOR
US**

SPONSORSHIP OPPORTUNITIES AVAILABLE!

[Download the sponsorship form \(PDF\)](#)

Questions can be directed to:

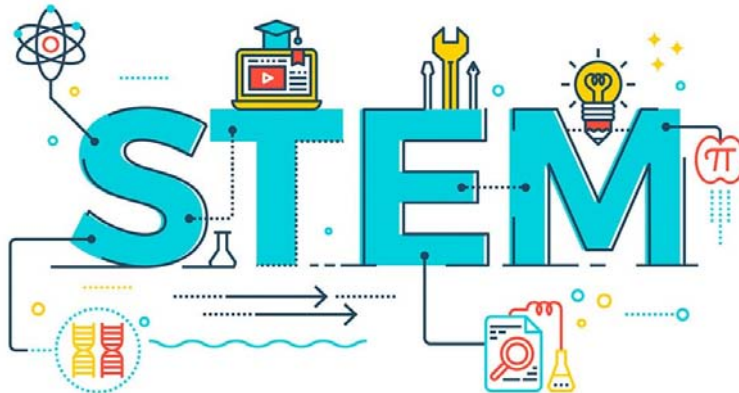
Dan Cronquist
ASCE LA Section Awards Committee Chair

661-283-2331

daniel.cronquist@aecom.com

ASCE LA Section Office
714-258-8306

GEMS (Girls Excelling in Mathematics with Success) STEMfest - Activity Mentor



When

Thursday, October 10, 2019 from
10:45 AM to 2:00 PM PDT

[Add to Calendar](#)

Where

Bourns, Inc

1200 Columbia Avenue
Riverside, CA 92507

Greetings YMF's Members,

The **2019 GEMS STEMfest** will feature multiple activities and presentations meant to inspire and encourage our younger aged girls to pursue careers in the STEM fields. **We would like to recruit mentors for an activity held at the event.**

During the activity, the girls will be working on a group project, and each table will be assigned a mentor to help them through the process. The mentors will be there to answer questions, help the girls brainstorm, and break the ice. Please come and helps us by signing up to be a mentor for the event!

If you would like to participate in this event, please register and contact Gustavo Gomez,
at gustavo.gomez@webbassociates.com or 951-261-4636



San Bernardino-Riverside
Branch

YOUNGER MEMBER FORUM

Register Now!

I can't make it



7th ANNUAL SCHOLARSHIP GOLF TOURNAMENT



GLEN IVY GOLF CLUB

24400 TRILOGY PARKWAY, CORONA, CA 92883
FRIDAY, OCTOBER 18, 2019

6:30 AM – Check-in / Breakfast / Driving Range
7:15 AM – Players to their Carts
7:30 AM – Shotgun Start

Entry Fee: \$120 per player / \$75 per student / \$400 per foursome

Sponsorship Packages Available:

Platinum Level	Gold Level	Silver Level	Bronze Level
Cost: \$1,500	Cost: \$1,000	Cost: \$600	Cost: \$400
<ul style="list-style-type: none"> • Chance to Golf with Industry Leaders / Student (pending) • 2 Golf Foursomes • Tee Box Sponsorship • 2 Tee Box Signs • Logo on Event Banner • ASCE Polo Shirts • 5-Minute Company Spotlight at Lunch 	<ul style="list-style-type: none"> • Chance to Golf with a Student • 1 Golf Foursome • ASCE Polo Shirts • Tee Box Sponsorship • Tee Box Sign • Logo on Event Banner 	<ul style="list-style-type: none"> • 1 Golf Foursome • Tee Box Sign • Logo on Event Banner 	<ul style="list-style-type: none"> • 1 Golf Twosome • Tee Box Sign • Logo on Event Banner

Additional Sponsorship Packages:

Breakfast - \$150 / Lunch - \$250 / Prize Hole - \$400 / Tee Box Sign - \$200 / Drinks - \$150

For additional Tournament Information, please contact
Jeff Meiter (909) 982-4601 / jeff@valued-eng.com



**2019-2020
BOARD OF DIRECTORS**

President

Chet Robinson, P.E., G.E.
City of Menifee
(951) 672-6777

President-Elect

Victor Elia, P.E., Q.S.D.
KWC Engineers
(951) 734-2130
victor.elia@kwcengineers.com

Vice-President

Emily Sipes, EIT
Rick Engineering Company
(951) 782-0707
esipes@rickengineering.com

Treasurer

Entcho Anguelov, P.E.
Riverside County Flood Control
and Water Conservation District
(951) 955-1234
eanguelo@rivco.org

Newsletter Editor

Mitzi Sepulveda, EIT
Albert A. Webb Associates
(951) 248-4280
mitzi.sepulveda@webbassociates.com

Secretary

John Thompson, P.E.
IMEG Corp.
(909) 942-5540
John.M.Thompson@imegcorp.com

Past President

Jeff Meiter, P.E., L.S.
Valued Engineering, Inc.
(909) 982-4601
jeff@valued-eng.com

Follow us on Linked-In now!

**TECHNICAL TOUR
THOMPSON PIPE GROUP**

Join ASCE to tour Thompson Pipe Group's manufacturing facility to learn about how pipe is manufactured and what are the technical specifications of various pipes:

Tour consist of two parts:

- 1) A tour of their manufacturing facility. Where Thompson Pipe will show how Reinforced Concrete Pipe and Box Culverts are made from raw materials to a finish product. They will go over all the different products that they bring to the market and lastly, they will even perform a D-Load (three-edged bearing) test where they can explain how concrete pipe is inspected and tested.
- 2) Thompson Pipe offers a technical presentation on the comparisons of rigid vs. flexible storm drain pipes. They will compare the differences between these two systems, the proper way to install them and even compare total installed cost.

Each tour takes about an hour and **lunch is included!**

Register early to guarantee your spot. Space is limited to 20 people. Hope to see you there!

Date: Friday November 8, 2019
Time: 10:30 AM – 1:00 PM
Location: Thompson Pipe Group
3011 N Laurel Avenue, Rialto, CA 92377
Cost: No Cost

Register: [Click Here](#)

Additional Info: Bring a hard hat and safety vest if you have one!

Questions, Contact: Victor Elia, PE Victor.Elia@KWCEngineers.com



WATER QUALITY MANAGEMENT PLAN (WQMP) WORKSHOP

Wednesday, December 11

8:00 a.m. — 4:00 p.m.

Circle City Center
365 N Main Street
Corona CA 92880

Hosted By:



COST: ASCE Member —\$110
ASCE Life Member —\$90
Public Employee —\$90
Non-Member—\$130

[CLICK HERE TO REGISTER!](#)

Join us to learn about the Santa Ana, Santa Margarita, and Whitewater Watersheds WQMP templates and current guidance.

Come to get insight from recognized stormwater engineering leaders. Whether you are new in preparing WQMP templates or are an avid BMP designer, you will have the opportunity to learn something new in this workshop. This workshop will help you sharpen your WQMP design skills and stay up to date with the new revisions that are set to come out soon!

***This workshop includes breakfast and lunch.**

For more information, contact:
Mitzi Sepulveda , E.I.T.
mitzi.sepulveda@webbassociates.com



AVAILABLE SPONSORSHIP LEVELS

\$750—Gold Level Sponsorship (3 available)

- Breakfast or lunch sponsor—little sign at the food table showing whose sponsoring it
- Company logo to be added to flyers, day-of agenda and 1st presentation slide
- Mentioned in announcements at beginning
- Provided 2-4 minutes to speak to audience
- Vendor table as well as cost for entry of (3) company representatives

\$500—Silver Level Sponsorship

- Company logo to be added to flyers, day-of agenda and 1st presentation slide
- Mentioned in announcements at beginning
- Vendor table as well as cost for entry of (2) company representatives

\$250—Bronze Level Sponsorship

- Company logo to be added to flyers, day-of agenda and 1st presentation slide
- Covers cost for entry of (1) company representative

ASCE San Bernardino Riverside Board of Directors

2019-2020 BOARD OF DIRECTORS



President
Chet Robinson, P.E., G.E.
City of Menifee Public Works
(951) 723-3879
crobinson@cityofmenifee.us



Geotechnical Committee Chair
Paul Kim, P.E., P.G. CEG.
pkim@albus-keefe.net



President-Elect
Victor Elia, P.E.
KWC Engineers
(951) 847-6750
vitor.elia@kwceengineers.com



Storm Water Committee Co-Chair
Cynthia Gabaldon, P.E.
CG Resource Management and Engineering, Inc.
(909) 455-8520
cynthia.gabaldon@cgrme.com



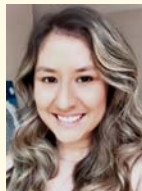
Vice President
Emily Sipes, E.I.T.
Rick Engineering Company
(951) 782-0707
esipes@rickengineering.com



Storm Water Committee Co-Chair
Arlene B. Chun, P.E.
San Bernardino County
Department of Public Works
(909) 387-8109
arlene.chun@dpw.sbcounty.gov



Treasurer
Entcho Anguelov, P.E.
Riverside County Flood Control
and Water Conservation District
(951) 955-1234
eanguelo@rivco.org



Newsletter Editor
Mitzi Sepulveda, E.I.T.
Webb Associates
(951) 686-1070
mitzi.sepulveda@webbassociates.com



Secretary
John Thompson, P.E.
IMEG Corp.
(909) 942-5540
john.m.thompson@imegcorp.com



Past President
Jeff Meiter, P.E.
Valued Engineering, Inc.
(909) 982-4601
jeff@valued-eng.com

**Want to advertise an
employment opportunity?**

**Contact the Newsletter Editor
Mitzi Sepulveda**

mitzi.sepulveda@webbassociates.com

Professional Directory

Civil - Water Resources - Inspection - Land Surveying
Construction Management - Program Management
Municipal Consulting - Grant Writing - Funds Acquisition



2305 Chicago Avenue - Riverside - CA - 92507
Ph. (951) 680-0440 - Fax (951) 680-0490
www.tkeengineering.com



Water • Wastewater • Recycled Water • Storm Water
Planning • CEQA/NEPA • Surveying
Design • Construction Management • Inspection

Engineering the Details, Because Details Matter

Riverside, CA 92501 • 951-684-6900 office
www.kriegerandstewart.com



180 N. Benson Avenue, Suite "A"
Upland, CA 91786
Office: (909) 982-4601
Cell: (909) 927-7347
jeff@valued-eng.com
www.valued-eng.com

Jeff D. Meiter, LS, RCE
President

Civil Engineering & Planning Since 1945



Corporate Headquarters
3788 McCray Street | Riverside, CA 92506
T: 951.686.1070 | F: 951.788.1256

Desert Region
36951 Cook Street #103 | Palm Desert, CA 92211
T: 760.568.5005 | F: 760.568.3443
www.webbassociates.com



Leighton Consulting, Inc.

866-LEIGHTON

Thomas C. Benson, Jr., PE, GE | President & CEO

Irvine
Los Angeles
Palm Desert
Rancho Cucamonga
San Diego
Santa Clarita
Temecula
Ventura

www.leightongroup.com

Geotechnical | Environmental | Testing and Inspection



Apple Valley Office
22221 US Hwy 18
Apple Valley, CA 92307
(760) 240-8000
Fax (760) 240-1400

Barstow Office
128 E. Fredricks St
Barstow, CA 92311
(760) 256-2068
Fax (760) 256-0418

Email: info@merrelljohnson.com

CHJ CONSULTANTS IS NOW
A TERRACON COMPANY!



1355 E. Cooley Drive | Suite C | Colton, CA 92324
(909) 824-7311 | chjconsultants.com

Environmental ■ Facilities ■ Geotechnical ■ Materials



Engineering and Consulting

- Land Planning
- Civil Engineering
- Surveying & Geomatics



- Water Resources
- Landscape Architecture
- Environmental Engineering

cascinc.com

Business Card Ad

Contact ASCE Board member
Entcho Anguelov, PE,
Branch Treasurer
eanquelo@rivco.org



Soil Testing - Metallurgy Lab
Corrosion Control Consulting
Thermal & Forensic Engineering

Ed Hernandez, PE, NACE CCT
info@projectxcorrosion.com

Phone: 213-928-7213 • ProjectXcorrosion.com



ASCE CONTINUING EDUCATION

Check out all of the content available from ASCE. When ordering be sure to use the Promo Code below so that the branch will receive 20 percent of the gross revenue from the registration. This helps the branch to reduce member costs, provide better activities and give out more scholarships for the benefit of the local engineering community.

WEBSANBRIBRA

http://www.asce.org/continuing_education/

Be sure to check out the career opportunities at ASCE's Career page at

<http://www.asce-sbriv.org/careers-1.html>

Calendar of Upcoming ASCE Events

October 5, 2019	2019 Annual Meeting, Installation of Officers and Awards Luncheon in Long Beach
October 10, 2019	GEMS (Girls Excelling in Mathematics with Success) STEM fest in Riverside
October 18, 2019	ASCE SB/R 7th Annual Scholarship Golf Tournament at Glen Ivy Golf Club
October 25, 2019	Fall PE Exam
November 1, 2019	ASCE SB/R Branch Board Meeting at Rick Engineering at 7:30AM
November 8, 2019	Technical tour at Thompson Pipe Group
December 1, 2019	ASCE SB/R Branch Board Meeting location TBD at 7:30AM
December 11, 2019	WQMP Training Workshop

Membership Information

Types of Membership and Annual Dues (National)

Students: FREE

Associate Member: \$50 per year of Baccalaureate degree and first year after, then incremental increases to \$225 over five years.

Member: \$225

Affiliate: \$225

Section (Branch) Dues: \$55

National ASCE student membership is now FREE! Those who have chapters or clubs still must be a member of them before joining National. Log onto <http://www.asce.org/join/> fill out the short application or call 1-800-548-ASCE (2723) and instantly become a member of ASCE.

Online membership renewal is available! Go to <http://www.asce.org/membership-communities/> You will need your membership number. All payments must be made with a major credit card. An e-receipt is transmitted to the member upon completion of the transaction.

Newsletter Information

Publisher:

ASCE San Bernardino-Riverside Counties Branch

P.O. Box 1541

Riverside, CA 92502-1541

Typesetting and Layout: Mitzi Sepulveda, EIT

Newsletter Editor:

Mitzi Sepulveda, EIT

mitzi.sepulveda@webbassociates.com

Identification Statement:

ASCE San Bernardino - Riverside Counties Branch

Newsletter is published monthly.

Subscription Rate: \$55 (included in section dues)

Advertisement Rates:

Professional Directory: \$250 per business card (10 issues)

Full page ad: \$235 per issue

1/2 page ad: \$125 per issue

1/4 page ad: \$75 per issue

Advertisement Information:

To place ads please contact the editor. Payments are due 30 days from the date of publication.

