

**President's
Message**

Chet Robinson, PE, GE



Inside this issue

President's Message	1
President's Message continued	2
Article: Engineer's Week	3
Event: Moreno Valley STEAM Expo	4
ASCE at CBU Dinner	5
November Tech Tour	6
Upcoming Events:	
PE Booth & Happy Hour	7
ASCE Report Card Luncheon	8
ASCE E-Day Celebration	9
ASCE SB/R Information	
ASCE Board of Directors	10
Professional Directory	11
Employment Opportunities	12
Calendar of Events	13
Membership Information	14
Newsletter Information	14

Hello ASCE Members,

By the time this newsletter is published, I am sure you are thoroughly tired of being wished a new year. So I will spare you the routine and talk about what I am excited for in the new year: Going Jeeping. I participate in a Jeep club and we have an annual event every January to Sand Hollow State Park in Hurricane, Utah. It is a bit of a drive to make it there, but it is one of my favorite events of the year. The park includes world class rock crawling, sand dunes, and incredible views of the surrounding area.

I bring this up in the newsletter because one of the biggest components of hitting the trails is preparing our rigs for the event and carrying the tools and supplies that we need to make it out. Jeeps come from the factory well equipped, but there a lots of upgrades that you can do to enhance their capability. Parts can be used to upgrade everything from lighting to enhanced suspension to locking differentials within the axles. Each Jeepster installs the upgrades that are right for them and then travels on trails that will be fun and challenging for their rig and driving ability.

Additionally, going out means going prepared with things that you will need during the day. Getting stuck or broken down is a very real possibility, so it helps to bring equipment to help us make it through the trip. This means having plenty of food and water, fluids for the vehicle, spare parts, and tools to fix things when they go wrong. I carry a cooler and multiple tool bags full of things that I might need.

How does this relate to engineering? Each of us has a different engineering specialty and our own kit of tools that we use. We spend our careers honing our engineering skills for various challenges that we encounter. One of the great things about Civil Engineering is that every project is different. We get to apply the set of tools that we have developed to solve problems in our daily work lives. Just as we plan for life adventures, we should be planning for upgrades and new tools within our engineering careers. This is what I love about ASCE. The organization is there to help us hone our skills, stay on top of advancements in our profession, and connect with our peers. We hope that you will be excited to participate with ASCE this year as we host on lunch meetings, social events, and technical tours that will help increase your engineering prowess.

President's message continued on page 2...



President's Message Continued . . .

The next few months will be busy for ASCE as we prepare for Engineers Week between February 16 to 22. We have two big events happening in February. The first will be the reveal for the Inland Empire's infrastructure report card. The report card has been in the works for several years. It has involved many people and countless hours of work to put together. We will be hosting a lunch meeting on Tuesday, February 18 and the Riverside Convention Center. We will have a panel discussion with some of the engineers who helped compile the report card. We hope you are able to participate and see how our Counties are doing.

On Friday, February 21 we will be hosting our 4th annual Engineers Day at Caltrans District 8 in Fontana. We bring in high school students so that they can be exposed to civil engineering and inspire them towards careers in our industry. This event is a great way to give back to the community that supports us. Please take a look at the flyer and reach out if you want to help out. We are looking for volunteers and sponsors for the event.

Sincerely,

Chet Robinson, PE, GE



ENGINEERS WEEK

By: Chris Casey, PE

National Engineer's week in the United States was founded in 1951 and is held every year during the week of George Washington's birthday (February 22nd). Most Americans know George Washington as our nation's first President, however, he was also an engineer and surveyor in his own right, 140 years before the implementation of the California Board for Engineers, Land Surveyors and Geologists.

Before George Washington was the father of our country, or a general, or even a married man, Washington was a rigorous outdoorsman and had a love for drafting and map-making. Studying topography, mapping straight routes through rugged terrain, and establishing property lines were among the many tasks his skills made possible. Such practical skills are among the basics of what today we call civil engineering. These talents were used to map out many of the county boundaries in northern Virginia. Surveying in the eighteenth-century was a respectable profession and held the promise of social and financial advancement, to which Washington took full advantage.



George Washington working as a surveyor in Virginia Colony

In 1775, George Washington was appointed the first engineer officers of the Army, during the American Revolution. Since their creation, engineers have served in combat in all subsequent American wars. The Army later established the Corps of Engineers as a separate, permanent branch and gave the engineers responsibility for founding and operating the U.S. Military Academy at West Point.

The purpose of National Engineers Week (E-Week) is to emphasize the contributions to society that engineers make. E-Week is also a time for engineers to highlight the importance of learning math, science, and technical skills to local students. Throughout E-Week, we celebrate engineers and invite you to join us. From highways and bridges to buildings and infrastructure of all sizes, shapes and dimensions, engineers built the modern age and deserve our thanks.

ASCE chapters nation-wide will be sponsoring local events to show how fun STEM careers can be and bring awareness to the impact engineers have on society. Stay tuned for one of the may events to take place at this year's Engineers Week.



About the author: As an active member of ASCE and a lifelong resident of California, Chris is a Civil Engineer at IMEG Corp. His day to day duties allow him opportunities to apply civil site engineering principles to the region's growing community in a wide variety of market sectors. His technical interests include storm-water management, roadway & site engineering, and sustainable design. He also has interest in law, licensure, and ethics.

MORENO VALLEY STEAM EXPO

By: Andrew Chan and Chris Sidor,

The STEAM Unity Expo, hosted by Moreno Valley Unified School District, introduces and promotes Science, Technology, Engineering, Arts and Math (STEAM) to students. The event is aimed at supporting students to be successful in school by giving students the opportunity to experience some interesting aspects of different careers. ASCE SB/R YMF partnered with Riverside County Flood Control and Water Conservation District and CASC Engineering and Consulting to introduce the integration of Drones into Engineering. At the event, the District's \$90,000 aerial mapping drone "Frankie" was showcased, which drew many onlookers and drone enthusiasts. The team was able to answer questions and provide keen insight on how the drones collect data, the types of mapping software, how this data is beneficial to civil engineers, and of course how high the drones could fly. The event was well-attended and an overall success. Special thanks to the team; Andrew Chan, Chris Sidor, Jeff Blakeborough, Robert Fowler, and Michael Arguetta, and Riverside County Flood Control and Water Conservation District for providing the drones for display.

Join us next time!



ASCE AT CBU DINNER SUMMARY

By: Chris Casey, PE

ASCE San Bernardino-Riverside and California Baptist University teamed together for a dinner social event to show off CBU's College of Engineering on January 16th. The event was well attended by both Cal Baptist students and professionals alike. The dinner provided was a 3 course meal at an attractive facility with exceptional service. The dinner provided an excellent for students to network with professionals for internships and entry level positions at top-tier companies in the Inland Empire.

After dinner CBU faculty gave a behind-the-scenes tour of their state-of-the-art college of engineering facilities. Local professionals had the opportunity to see the modern classrooms and laboratories with the latest technologies. This was a rare opportunity to see how students college learning is training them for a real engineering position.

The dinner social was a great way to network with our peers and meet new people in the industry.

Thanks to everyone who came out and we hope to see you at our next event!



ASCE NOVEMBER TECH TOUR AT THOMPSON PIPE GROUP

By: Victor Elia, PE

In case you didn't make it, the ASCE San Bernardino/Riverside Branch along with the Younger Member Forum tour of Thompson Pipe Group's manufacturing facility in Rialto was fantastic! Thompson was such a great host led by Aaron Pettit and Branimir Kovac. We experienced how they make Reinforced Concrete Pipe, Reinforced Box Culverts and Flared End Sections. They roll their own rebar cages, with sparks flying to construct pipes in diameters from 12" to 144". Their 55 acre facility contains many different pipe thicknesses and sizes which we enjoyed hearing the stories of why these different pipes were ordered for specific site constraints. Thompson even performed a D-Load test after explaining the differences in trench loading between rigid pipe and flexible pipes. If you have a chance to tour this facility in the future, I would recommend it. I'm looking forward to our next learning ASCE opportunity.



When it's
over, it's
over!
Don't let
the test
get you
down.
Let's
celebrate!

ASCE PE BOOTH & SOCIAL EVENT

For more info on how to become an ASCE member or to learn more about what ASCE Younger Members Forum (YMF) has to offer in your local area. Visit www.ascelasection.org

LA Section Local Chapters:

Los Angeles YMF
Orange County YMF
San Bernardino-Riverside YMF
Santa Barbara/Ventura YMF
Southern San Joaquin YMF
San Luis Obispo YMF

When: FRIDAY, APRIL 17, 2020
Membership Booth

(Pick Up Your Free ASCE Gift)

Where: Pomona Fairplex

Time: 6-8am

Post PE Exam Social Event

Where: House of Wings

2317 D Street
La Verne, CA 91750

Time: After the PE Exam (5-8pm)

What: Free Wings & Appetizers!

Who: Everyone is invited . . .
especially test takers

For more info or if you have any questions, contact Andrew Chan at achan@rivco.org



**2019-2020
BOARD OF DIRECTORS**

President
Chet Robinson, P.E., G.E.
City of Menifee
(951) 723-3879
crobinson@cityofmenifee.us

President-Elect
Victor Elia, P.E., QSD
KWC Engineers
(951) 734-2130
victor.elia@kwceengineers.com

Vice President
Emily Sipes
Rick Engineering Company
(951) 782-0707
esipes@rickengineering.com

Treasurer
Entcho Anguelov, P.E.
RCFC&WCD
(951) 955-1234
eanguelo@rivco.org

Newsletter Editor
Mitzi Sepulveda, EIT
Albert A. Webb Associates
(951) 248-4280
mitzi.sepulveda@webbassociates.com

Secretary
John Thompson, PE
IMEG Corp
(909) 942-5540
john.m.thompson@imegcorp.com

Past President
Jeff Meiter, P.E., L.S.
Valued Engineering, Inc.
(909) 982-4601
jeff@valued-eng.com



**LOS ANGELES SECTION, REGION 9
SAN BERNARDINO & RIVERSIDE COUNTIES BRANCH
FOUNDED 1953**

2020 ASCE REPORT CARD RELEASE

START THE NEW YEAR WITH ASCE BY JOINING US FOR THE BIG REVEAL OF THE 2020 SAN BERNARDINO AND RIVERSIDE COUNTIES ASCE REPORT CARD PRESENTED BY GEORGE JOHNSON, RIVERSIDE COUNTY CEO. THIS MUCH ANTICIPATED EVENT HAS BEEN YEARS IN THE MAKING WITH COUNTLESS HOURS OF EVALUATING AND SCORING THE INFRASTRUCTURE OF THE REGION SINCE THE PREVIOUS REPORT CARD OF 2010. THIS EVENT WILL ALSO KICKOFF THE CELEBRATION OF ENGINEER'S WEEK.

REGISTER EARLY TO GUARANTEE A SEAT. HOPE TO SEE YOU THERE!

DATE: TUESDAY, FEBRUARY 18, 2020
TIME: 11:30 AM – 1:00 PM
LOCATION: RIVERSIDE CONVENTION CENTER
3637 FIFTH STREET, RIVERSIDE, CA 92501

COST: \$35 ASCE MEMBERS W/ RSVP
\$30 GOVERNMENT EMPLOYEES W/ RSVP
\$25 ASCE LIFE MEMBERS & STUDENTS W/ RSVP
\$40 NON-MEMBERS / WALK-INS / NO RSVP
*PARKING IS FREE

REGISTER: <http://events.constantcontact.com/register/event?llr=fcorsuhab&oeidk=a07eguytizey485a05d6>

DEADLINE: Please RSVP by February 13, 2020

ADDITIONAL INFO: VICTOR ELIA, P.E. AT VICTOR.ELIA@KWCENGINEERS.COM



ASCE 4TH Annual Engineers Day

The American Society of Civil Engineers San Bernardino-Riverside Branch and Younger Members in partnership with Caltrans is hosting our 4th annual Engineers Day during the National Engineers Month in February 2020. The goal is to expose students to civil engineering, educate our youth about projects in their own community and to inspire the students with future career possibilities.

Friday, February 21, 2020 **8 AM to 2 PM**
at Caltrans District 8
13892 Victoria Street, Fontana, CA 92336



6th - 12th Grade Students Interested in Attending?

ASCE Members Interested in Volunteering?

If you are a Student interested in Attending or an ASCE member interested in Volunteering in this event please contact:

Emily Sipes - Branch
Alexander Liu - YMF

esipes@rickengineering.com
alexander.liu@wsp.com

SPONSORSHIP OPPORTUNITIES are available

Corporate Sponsor (Company Logo on shirts) - \$250
Silver Sponsor (Awards & Prizes for the Students) - \$400
Gold Sponsor (Lunch Sponsorship for the event) - \$600

Please Contact Melissa Barbosa - mbarbosa@azusaca.gov

"I really enjoyed working with high school students. Being an impromptu judge, I can see the enthusiasm, excitement & glow in the eyes of all students competing in the tower building project. These are our future Civil Engineers. I look forward to participating next year also. Thank you ASCE for the opportunity."

– Dr. Ramakrishna Tadi, P.E. (Caltrans)



ASCE San Bernardino Riverside - 2017 Dream Big Engineers Day

K-12 Outreach

- STEAM
- Civil Engineering
- Hands On Learning
- Impromptu Building
- Public Speaking
- E-Week
- Future Leaders

ASCE San Bernardino Riverside Board of Directors

2019-2020 BOARD OF DIRECTORS



President
Chet Robinson, P.E., G.E.
City of Menifee Public Works
(951) 723-3879
crobinson@cityofmenifee.us



Geotechnical Committee Chair
Paul Kim, P.E., P.G. CEG.
pkim@albus-keefe.net



President-Elect
Victor Elia, P.E.
KWC Engineers
(951) 847-6750
vitor.elia@kwceengineers.com



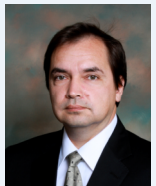
Storm Water Committee Co-Chair
Cynthia Gabaldon, P.E.
CG Resource Management and Engineering, Inc.
(909) 455-8520
cynthia.gabaldon@cgrme.com



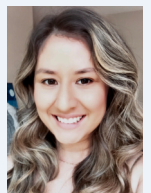
Vice President
Emily Sipes, E.I.T.
Rick Engineering Company
(951) 782-0707
esipes@rickengineering.com



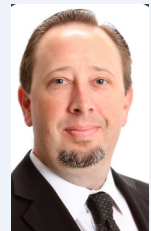
Storm Water Committee Co-Chair
Arlene B. Chun, P.E.
San Bernardino County
Department of Public Works
(909) 387-8109
arlene.chun@dpw.sbcounty.gov



Treasurer
Entcho Anguelov, P.E.
Riverside County Flood Control
and Water Conservation District
(951) 955-1234
eanguelo@rivco.org



Newsletter Editor
Mitzi Sepulveda, E.I.T.
Webb Associates
(951) 686-1070
mitzi.sepulveda@webbassociates.com



Secretary
John Thompson, P.E.
IMEG Corp.
(909) 942-5540
john.m.thompson@imegcorp.com



Past President
Jeff Meiter, P.E.
Valued Engineering, Inc.
(909) 982-4601
jeff@valued-eng.com

**Want to advertise an
employment opportunity?**

**Contact the Newsletter Editor
Mitzi Sepulveda**

mitzi.sepulveda@webbassociates.com

Professional Directory



Water • Wastewater • Recycled Water • Storm Water
Planning • CEQA/NEPA • Surveying
Design • Construction Management • Inspection

Engineering the Details, Because Details Matter

Riverside, CA 92501 • 951-684-6900 office
www.kriegerandstewart.com



Civil Engineering & Planning
Since 1945



www.webbassociates.com



Leighton Consulting, Inc.

866-LEIGHTON

Thomas C. Benson, Jr., PE, GE | President & CEO

Irvine
Los Angeles
Palm Desert
Rancho Cucamonga
San Diego
Santa Clarita
Temecula
Ventura

www.leightongroup.com

Geotechnical | Environmental | Testing and Inspection



Apple Valley Office

22221 US Hwy 18
Apple Valley, CA 92307
(760) 240-8000
Fax (760) 240-1400

Email: info@merrelljohnson.com

Barstow Office

128 E. Fredricks St
Barstow, CA 92311
(760) 256-2068
Fax (760) 256-0418



MBE • DBE • SBE • SBA 8(a)

Soil Testing • Metallurgy Lab
Corrosion Control Consulting
Thermal & Forensic Engineering

Ed Hernandez, PE, NACE CCT
info@projectxcorrosion.com



Phone: 213-928-7213 • ProjectXcorrosion.com

Civil - Water Resources - Inspection - Land Surveying
Construction Management - Program Management
Municipal Consulting - Grant Writing - Funds Acquisition



2305 Chicago Avenue - Riverside - CA - 92507
Ph. (951) 680-0440 - Fax (951) 680-0490
www.tkeengineering.com

**CHJ CONSULTANTS IS NOW
A TERRACON COMPANY!**



CHJ Consultants
A Terracon COMPANY

1355 E. Cooley Drive | Suite C | Colton, CA 92324
(909) 824-7311 | chjconsultants.com

Environmental ■ Facilities ■ Geotechnical ■ Materials



VALUED
ENGINEERING, INC.
CIVIL ENGINEERING • LAND SURVEYING • LAND PLANNING

"Engineering
with values
and integrity"

180 N. Benson Avenue, Suite "A"
Upland, CA 91786

Office: (909) 982-4601

Cell: (909) 927-7347

jeff@valued-eng.com

www.valued-eng.com

Jeff D. Meiter, LS, RCE
President



Engineering and Consulting

Civil Engineering Environmental Engineering Land Planning

Landscape Architecture Surveying & Geomatics

Water Resources

www.cascinc.com

Business Card Ad

Contact ASCE Board member
Entcho Anguelov, PE,
Branch Treasurer
eanquelo@rivco.org



Lunch “On Us” and Learning about Permeable Interlocking Concrete Pavements...The Ideal Combo Meal.



ANGELUS PERMEABLE INTERLOCKING PAVING STONES (PICP) meets the US Environmental Protection Agency’s criteria as a structural Best Management Practice (BMP) while helping comply with US National Pollutant Discharge Elimination System (NPDES) regulations. They are a part of Low Impact Design (LID) and are LEED credit eligible under Sustainable Sites.

REDUCE CONTAMINANTS AND DECREASE RAINWATER RUNOFF rates while providing an attractive pedestrian, parking or roadway surface that is resilient, low-maintenance and ADA compliant.

100% PERMEABLE SURFACE allows rainwater to pass through small, aggregate-filled openings between solid, high strength durable concrete paving stones and into an open-graded base where it is stored until infiltrating back into sub-soils and replenishing groundwater.

MAXIMIZE USABLE/BUILDABLE SPACE ON SITE and save on costs by reducing or eliminating the need for drainage appurtenances, storm sewers and detention or retention ponds.

EARN 1 PROFESSIONAL DEVELOPMENT HOUR (PDH) by attending a Lunch ‘n Learn presented by an Interlocking Concrete Pavement Institute (ICPI) qualified instructor.

Angelus Permeable Holland installed in a herringbone pattern

Schedule Your Angelus Lunch ‘n Learn today at angeluspavers.com/lunch



Shift Your Career Perspective

ALBERT A.
WEBB
ASSOCIATES



webbassociates.com/careers

ASCE CONTINUING EDUCATION

Check out all of the content available from ASCE. When ordering be sure to use the Promo Code below so that the branch will receive 20 percent of the gross revenue from the registration. This helps the branch to reduce member costs, provide better activities and give out more scholarships for the benefit of the local engineering community.

WEBSANBRIBRA

http://www.asce.org/continuing_education/

Be sure to check out the career opportunities at ASCE's Career page at

<http://asce-sbriv.org/job-dashboard/careers/>

Calendar of Upcoming ASCE Events

February 18, 2020	ASCE Report Card
February 21, 2020	Caltrans District 8 (Fontana)
March 6, 2020	ASCE Board Meeting at Rick Engineering 7:30AM-9:00AM
March 11, 2020	Storm Water Committee Kick-off Meeting
April 23, 2020	General Meeting—RCTD Public Affairs, Speaker: Michael Blomquist

Membership Information

Types of Membership and Annual Dues (National)

Students: FREE

Associate Member: \$50 per year of Baccalaureate degree and first year after, then incremental increases to \$225 over five years.

Member: \$225

Affiliate: \$225

Section (Branch) Dues: \$55

National ASCE student membership is now FREE! Those who have chapters or clubs still must be a member of them before joining National. Log onto <http://www.asce.org/join/> fill out the short application or call 1-800-548-ASCE (2723) and instantly become a member of ASCE.

Online membership renewal is available! Go to <http://www.asce.org/membership-communities/> You will need your membership number. All payments must be made with a major credit card. An e-receipt is transmitted to the member upon completion of the transaction.

Newsletter Information

Publisher:

ASCE San Bernardino-Riverside Counties Branch

P.O. Box 1541

Riverside, CA 92502-1541

Typesetting and Layout: Mitzi Sepulveda, EIT

Newsletter Editor:

Mitzi Sepulveda, EIT

mitzi.sepulveda@webbassociates.com

Identification Statement:

ASCE San Bernardino - Riverside Counties Branch

Newsletter is published monthly.

Subscription Rate: \$55 (included in section dues)

Advertisement Rates:

Professional Directory: \$250 per business card (10 issues)

Full page ad & 3 LinkedIn Posts: \$235 per issue

1/2 page ad & 2 LinkedIn Posts: \$125 per issue

1/4 page ad & 1 LinkedIn Post: \$75 per issue

Advertisement Information:

To place ads please contact the editor. Payments are due 30 days from the date of publication.



Professional Directory: \$250 per business card (10 issues)